

## WHAT YOU NEED

Finished size - 10 1/2" x 58"

Canvas - 1/6 yd.

Lining - 1/6 yd.

Thin Batting - 36" wide 1/6 yd.

Iron On Fabric Label

© 2014 Sweetwater

[www.sweetwaterscrapbook.etsy.com](http://www.sweetwaterscrapbook.etsy.com)

[www.sweetwaterstreet.com](http://www.sweetwaterstreet.com)

blog - [www.sweetwater.typepad.com](http://www.sweetwater.typepad.com)

info@sweetwaterscrapbook.com



*Sweetwaters*

SEWING BIN

## INSTRUCTIONS

1/4" seam allowance is included

### Canvas

1. Cut five squares 5 1/2" x 5 1/2"
2. With wrong sides together place each canvas square over a piece of thin batting that is slightly larger.
3. Topstitch close to the edge of the canvas. Refer to diagram #1.
4. Trim excess batting even with the canvas.

### Iron On Label

1. With a rotary cutter trim the label leaving 1/8" of white next to the printed image.
2. Remove paper backing from label.
3. Iron to the center of one of the canvas pieces and topstitch close to the edges of the label.

### Scissors Holder

1. Cut a piece of canvas 2" x 5 1/2".
2. With wrong sides together fold the 5 1/2" raw edges to the center of the strip and press.
3. Fold again matching the folded edges and press. Refer to diagram #2.
4. Machine topstitch close to the edges.
5. Place strip over the center of one of the canvas squares.
6. Stitch across the strip 2" from each end. Refer to diagram #3.

### Sides

1. With right sides together sew the four canvas squares together along the sides. Refer to diagram #4.

### Bottom

1. With right sides together sew the sides to the bottom matching the side seams with each corner of the bottom.
2. Place the bottom next to the sewing machine and the sides on top.
3. When you reach a seam and a corner make sure your needle is down and then pivot to the next side.
4. Do not turn right side out yet.

### Lining

1. Cut five pieces fabric 5 3/8" x 5 3/8".  
(The lining pieces are slightly smaller to allow for the bulk of the batting on the outside pieces.)
2. With right sides together sew the sides together leaving a 3" opening on one lining side.
3. Sew the bottom to the sides the same as the outside. Do not turn.
4. With right sides together place the lining and the outside together and sew along the top edge.
5. Turn right side out through the opening in the lining.
6. Sew the opening closed.
7. Push the lining to the inside of the bin and press the top edge.
8. Machine topstitch along the top edge.

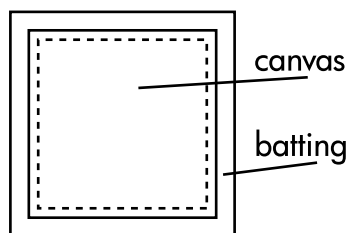


Diagram 1

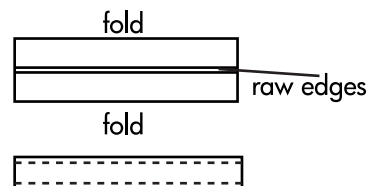


Diagram 2

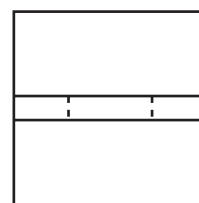


Diagram 3

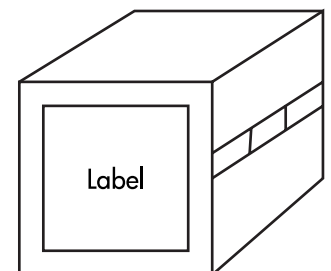


Diagram 4