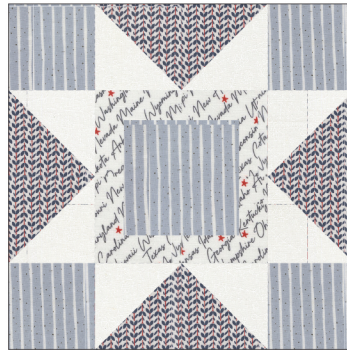


The correction is highlighted below in the red box.

BLOCK #3

FULL SIZE BLOCK



MINI BLOCK



CUTTING INSTRUCTIONS

Below are the pieces to cut for both the Full Size and the Mini Border Block. Cut both sets, making sure to keep each set separate.

	Quantity	Size	Quantity	Size	Quantity	Size	Quantity	Size
FULL SIZE BLOCK	8	5" x 5"	4	5" x 5"	4	5" x 9.5"	2	2" x 6.5"
			1	6.5" x 6.5"			2	2" x 9.5"
MINI BLOCK for border	8	2" x 2"	4	2" x 2"	4	2" x 3.5"	1	3.5" x 3.5"

CENTER SQUARE FOR FULL SIZE BLOCK

From the cut prints and cream, sew the pieces together, right sides together.

